

# Mounting Structure GS630 Type

## Ground Solar Mounting



### Features

Place of use: Ground

Wind load: max. 45m/s

Snow load: max. 1.5kN/m<sup>2</sup>

Solar module: Framed and unframed

Module orientation: Vertical or horizontal

Roof Angle: 5-60°

Surface treatment: Stainless steel ,Anodized Aluminum

Material: Stainless steel SUS304, Aluminum 6063-T5

Hot dipped steel Q235

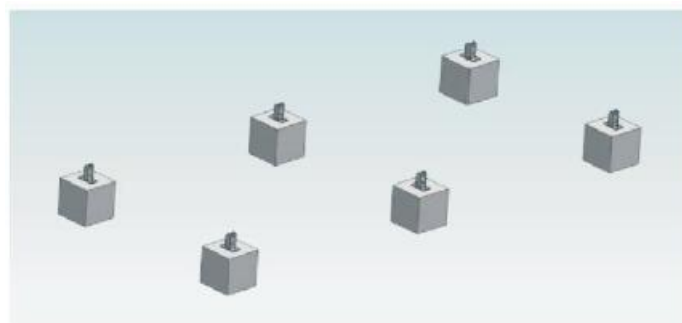
Standard: Suit for EU, AU, US standard

Warranty: 10years on materials

## Installation

### Step 1:

Install base on the concrete ground with expansion bolts, as below:



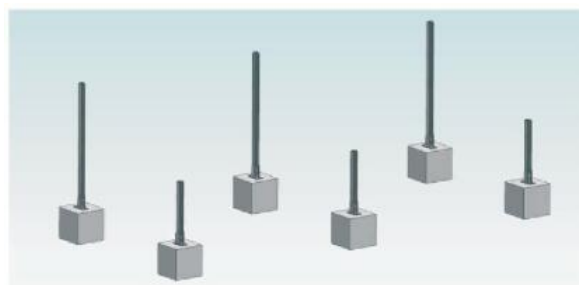
### Step 3:

Install hinge on the front post and back post with hexagon bolts, as below:



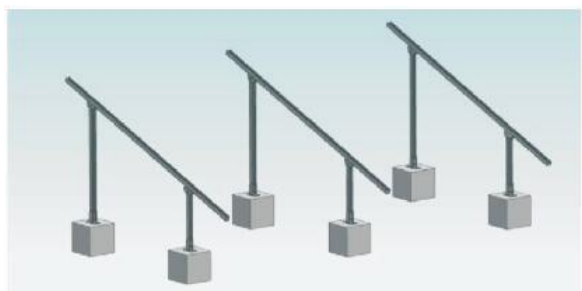
### Step 2:

Install front posts and back posts on the base with hexagon bolts, as below



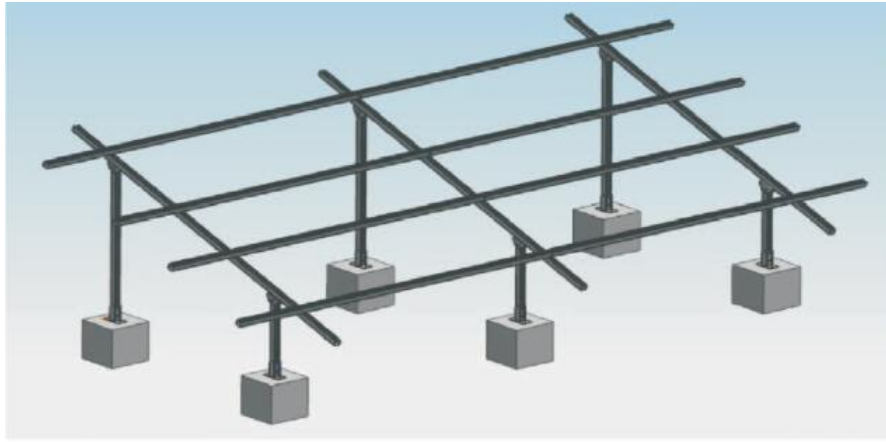
### Step 4:

Install cross beam on the hinge with hexagon bolts, as below:



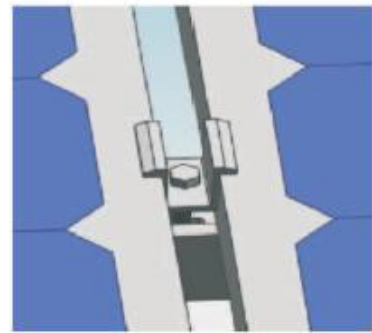
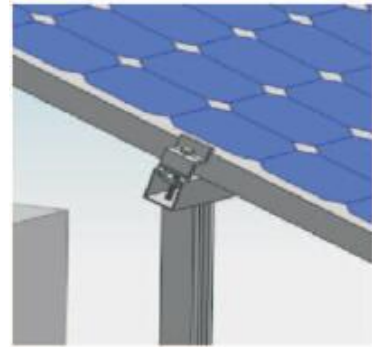
**Step 5:**

Install rail on the cross beam, as below:



**Step 6:**

Install solar panel with solar clamps and T bolts, as below:



**Application**

